

PRELIMINARY



Our Community



**NWX**  
NORTHWEST CROSSING

- JEFFERSON** — NWX — Plan 1, Plan 2
- MADISON** — NWX — Plan 1, Plan 2, Plan 3
- GALLATIN** — NWX — Plan 1, Plan 2



406 920 4060

2952 Technology Blvd W  
Suite 102  
Bozeman, MT 59718

northwestcrossing@williamshomes.com



All information provided herein, including floorplans, renderings, square footages, home features, site plan, and community amenities, is Preliminary and subject to change without prior notice or obligation. Floorplans and renderings are artists' conception and not necessarily to exact scale. Copyright © 2023 Williams Homes. All rights reserved. State of Montana Board of Realty License #RRE-BRO-LIC-79203. Equal Housing Opportunity.







# JEFFERSON

— NWX —

## Plan 1 & 2

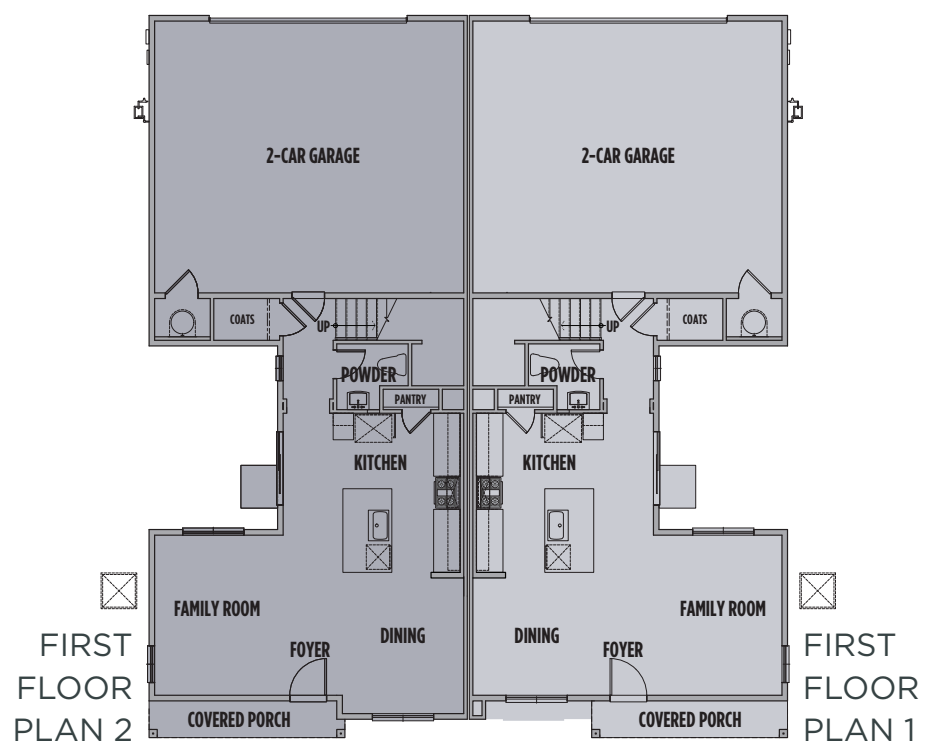
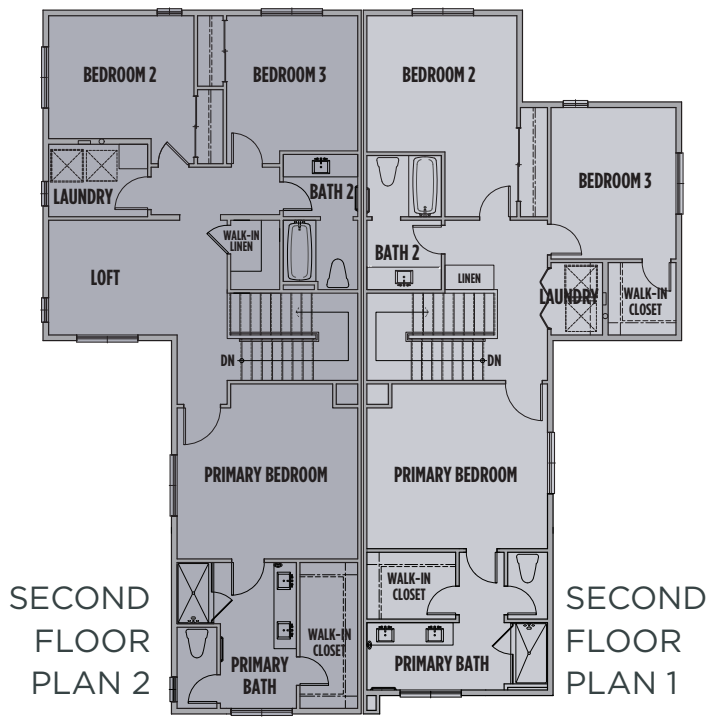
PLAN 1  
1,690 Approx. Sq. Ft.  
3 Bedrooms | 2.5 Baths  
2-Car Garage

PLAN 2  
1,827 Approx. Sq. Ft.  
3 Bedrooms | 2.5 Baths  
Loft | 2-Car Garage



406 920 4060  
2952 Technology Blvd W  
Suite 102  
Bozeman, MT 59718

northwestcrossing@williamshomes.com



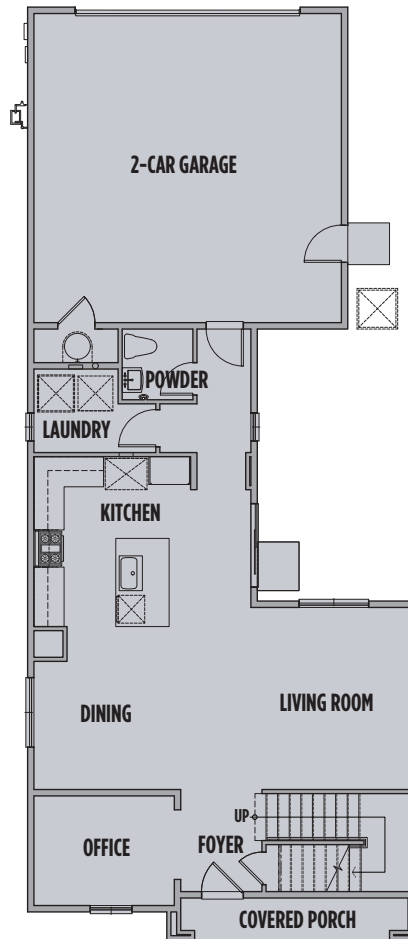
All information provided herein, including floorplans, renderings, square footages, home features, site plan, and community amenities, is Preliminary and subject to change without prior notice or obligation. Floorplans and renderings are artists' conception and not necessarily to exact scale. Copyright © 2023 Williams Homes. All rights reserved. State of Montana Board of Realty License #RRE-BRO-LIC-79203. Equal Housing Opportunity.



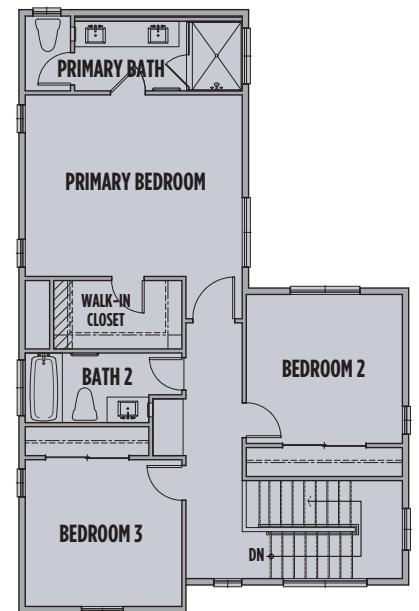


# Plan 1

1,810 Approx. Sq. Ft.  
3 Bedrooms | 2.5 Baths  
Office | 2-Car Garage



FIRST FLOOR



SECOND FLOOR

406 920 4060

2952 Technology Blvd W  
Suite 102  
Bozeman, MT 59718

northwestcrossing@williamshomes.com



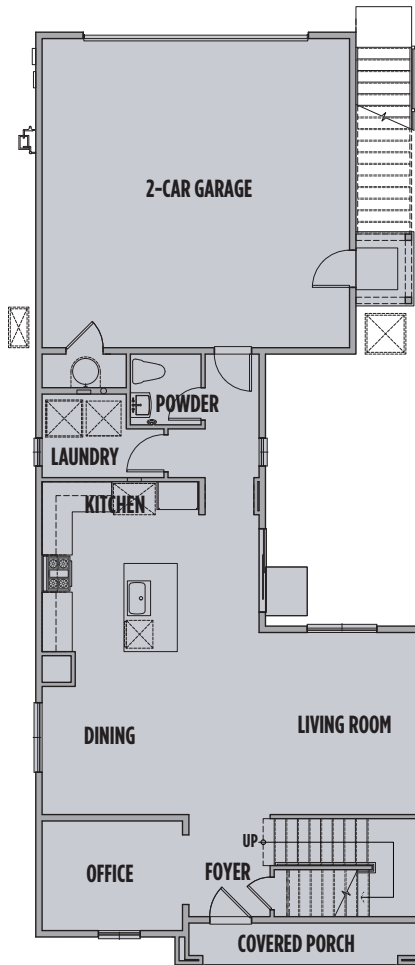
All information provided herein, including floorplans, renderings, square footages, home features, site plan, and community amenities, is Preliminary and subject to change without prior notice or obligation. Floorplans and renderings are artists' conception and not necessarily to exact scale. Copyright © 2023 Williams Homes. All rights reserved. State of Montana Board of Realty License #RRE-BRO-LIC-79203. Equal Housing Opportunity.



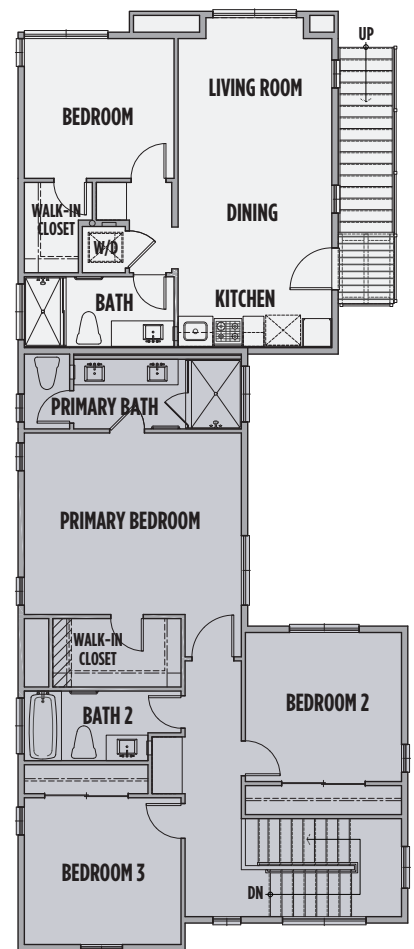


# Plan 1X

1,810 Approx. Sq. Ft.  
3 Bedrooms | 2.5 Baths  
Office | 2-Car Garage  
524 Approx Sq. Ft.  
1 Bedroom ADU



FIRST FLOOR



SECOND FLOOR

406 920 4060

2952 Technology Blvd W  
Suite 102  
Bozeman, MT 59718

northwestcrossing@williamshomes.com



All information provided herein, including floorplans, renderings, square footages, home features, site plan, and community amenities, is Preliminary and subject to change without prior notice or obligation. Floorplans and renderings are artists' conception and not necessarily to exact scale. Copyright © 2023 Williams Homes. All rights reserved. State of Montana Board of Realty License #RRE-BRO-LIC-79203. Equal Housing Opportunity.





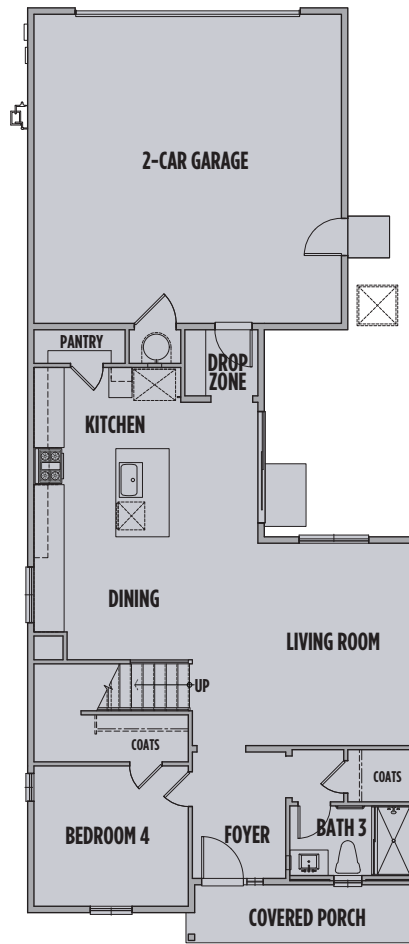
# MADISON

— NWX —

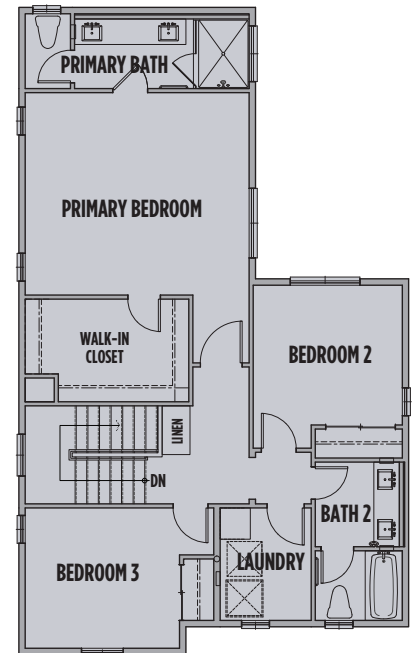


## Plan 2

1,974 Approx. Sq. Ft.  
4 Bedrooms | 3 Baths  
2-Car Garage



FIRST FLOOR



SECOND FLOOR

406 920 4060

2952 Technology Blvd W  
Suite 102  
Bozeman, MT 59718

northwestcrossing@williamshomes.com



All information provided herein, including floorplans, renderings, square footages, home features, site plan, and community amenities, is Preliminary and subject to change without prior notice or obligation. Floorplans and renderings are artists' conception and not necessarily to exact scale. Copyright © 2023 Williams Homes. All rights reserved. State of Montana Board of Realty License #RRE-BRO-LIC-79203. Equal Housing Opportunity.





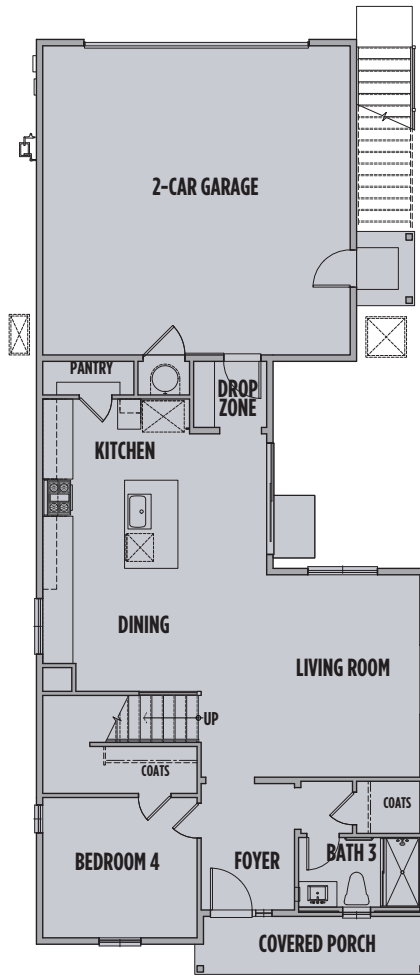
# MADISON

— NWX —

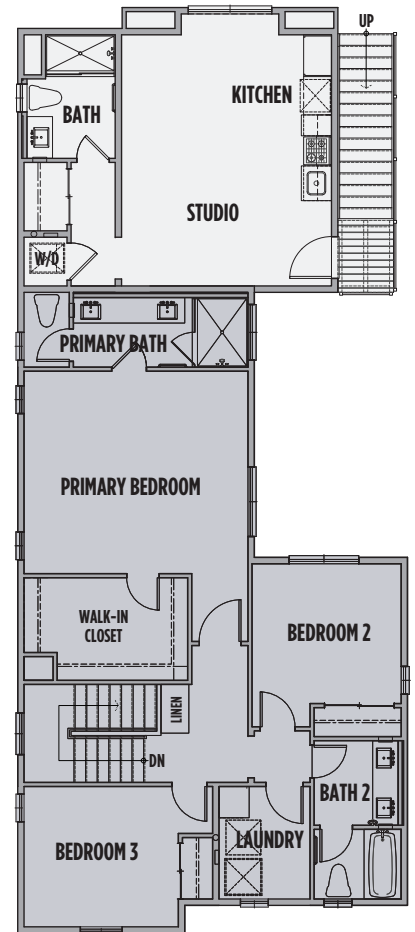


## Plan 2X

1,974 Approx. Sq. Ft.  
4 Bedrooms | 3 Baths  
2-Car Garage  
428 Approx. Sq. Ft.  
Studio ADU



FIRST FLOOR



SECOND FLOOR

406 920 4060

2952 Technology Blvd W  
Suite 102  
Bozeman, MT 59718

northwestcrossing@williamshomes.com



All information provided herein, including floorplans, renderings, square footages, home features, site plan, and community amenities, is Preliminary and subject to change without prior notice or obligation. Floorplans and renderings are artists' conception and not necessarily to exact scale. Copyright © 2023 Williams Homes. All rights reserved. State of Montana Board of Realty License #RRE-BRO-LIC-79203. Equal Housing Opportunity.

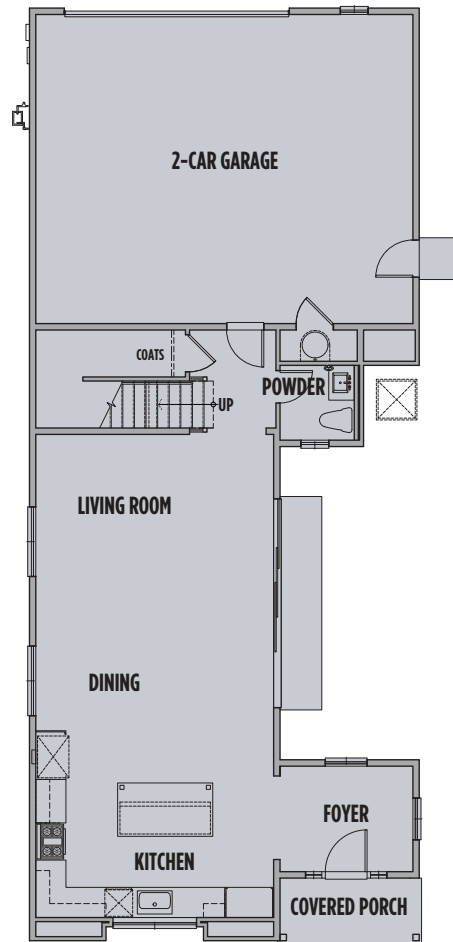




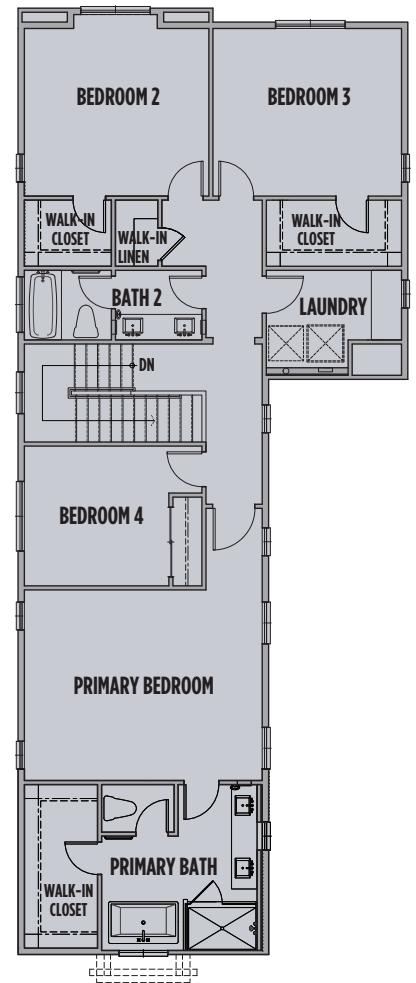


# Plan 3

2,299 Approx. Sq. Ft.  
4 Bedrooms | 2.5 Baths  
2-Car Garage



FIRST FLOOR



SECOND FLOOR



406 920 4060

2952 Technology Blvd W  
Suite 102  
Bozeman, MT 59718

northwestcrossing@williamshomes.com



All information provided herein, including floorplans, renderings, square footages, home features, site plan, and community amenities, is Preliminary and subject to change without prior notice or obligation. Floorplans and renderings are artists' conception and not necessarily to exact scale. Copyright © 2023 Williams Homes. All rights reserved. State of Montana Board of Realty License #RRE-BRO-LIC-79203. Equal Housing Opportunity.





# GALLATIN

— NWX —

## Plan 1

2,041 Approx. Sq. Ft.  
4 Bedrooms | 2.5 Baths  
2-Car Garage

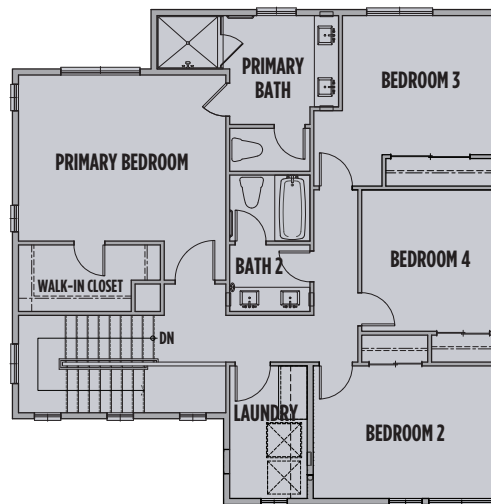


406 920 4060

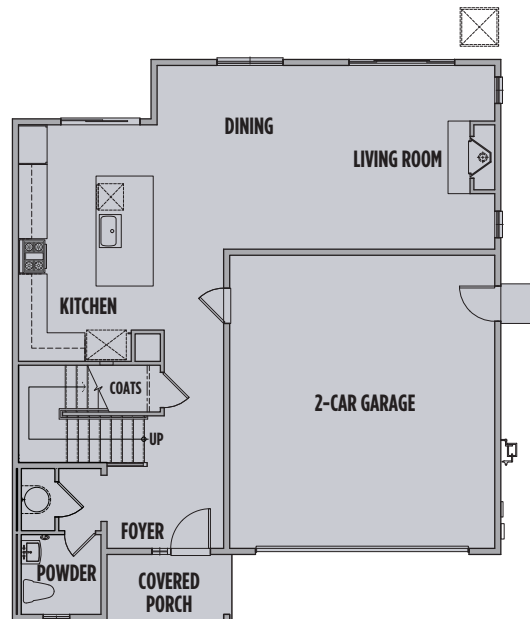
2952 Technology Blvd W  
Suite 102  
Bozeman, MT 59718

northwestcrossing@williamshomes.com

SECOND FLOOR



FIRST FLOOR



All information provided herein, including floorplans, renderings, square footages, home features, site plan, and community amenities, is Preliminary and subject to change without prior notice or obligation. Floorplans and renderings are artists' conception and not necessarily to exact scale. Copyright © 2023 Williams Homes. All rights reserved. State of Montana Board of Realty License #RRE-BRO-LIC-79203. Equal Housing Opportunity.



# GALLATIN

— NWX —

## Plan 2

2,338 Approx. Sq. Ft.  
4 Bedrooms | 3 Baths  
Loft or Optional 5th Bedroom  
2-Car Garage

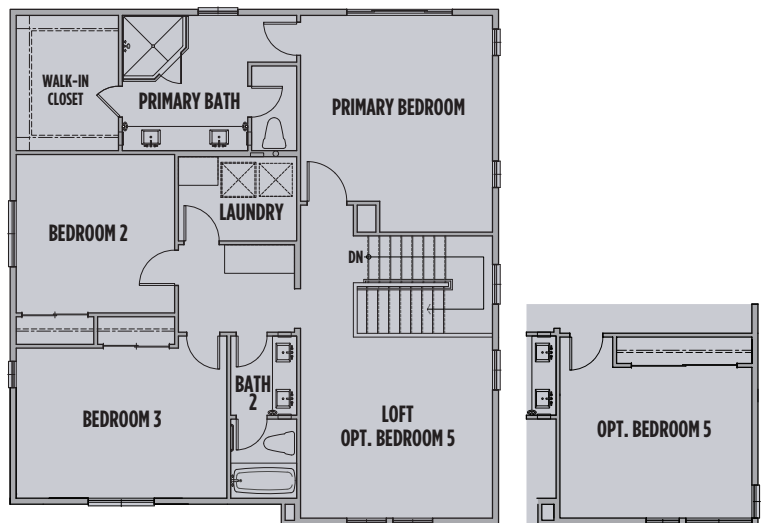


406 920 4060

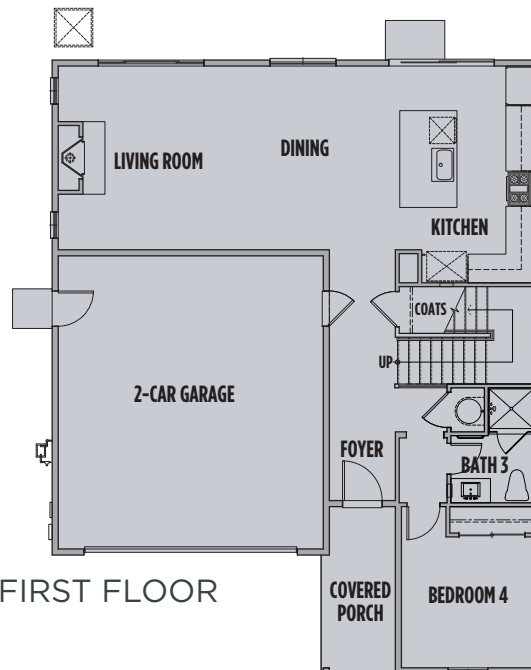
2952 Technology Blvd W  
Suite 102

Bozeman, MT 59718

northwestcrossing@williamshomes.com



SECOND FLOOR



FIRST FLOOR



All information provided herein, including floorplans, renderings, square footages, home features, site plan, and community amenities, is Preliminary and subject to change without prior notice or obligation. Floorplans and renderings are artists' conception and not necessarily to exact scale. Copyright © 2023 Williams Homes. All rights reserved. State of Montana Board of Realty License #RRE-BRO-LIC-79203. Equal Housing Opportunity.







**JEFFERSON**

— NWX —

## Standard Home Features



406 920 4060

2952 Technology Blvd W  
Suite 102  
Bozeman, MT 59718

northwestcrossing@williamshomes.com

### Timeless Architectural Character & Exterior Details

- Fire-retardant asphalt shingle roof
- Contemporary entry door colored to match exterior color scheme with four-panel glass cutout and satin nickel finish hardware
- Chime front entry doorbell
- Sectional steel roll-up garage doors with garage door opener and two remotes
- Pre-finished fiber cement board cement exterior siding with gable accents
- Full landscaping with in-ground sprinkler system and gravel beds around home (upgraded landscaping optional)
- Fenced back and side yards

### Gracious Interior Appointments

- Luxury vinyl plank flooring at entry and throughout living and wet areas
- Distinctive, interior passage doors with designer-selected finish hardware
- Quartz countertops and luxury vinyl plank in bathrooms
- Interior laundry with electric appliance hookups (washer and dryer optional)
- Baseboards and matching 3-4" door trim, with matching white electrical switches and outlets throughout
- Cable/data connection in living room and primary bedroom
- Ceiling fans in living and primary bedroom areas

### Inspiring Kitchen Designs

- Stainless steel appliance suite including refrigerator with water/ice-maker
- Single-basin stainless steel sink with Moen faucet
- Heavy duty garbage disposal
- Wood cabinetry in white or maple charcoal per plan with soft-close drawers and doors
- Quartz countertops with 4" back splash
- Luxury vinyl plank flooring
- Illuminating LED recessed lighting
- Kitchen island with extra storage and electrical outlet

### Primary Suite Elegance

- Wood cabinetry in white or maple charcoal per plan with soft-close drawers and doors
- Dual undermount china sinks with matching brushed nickel fixtures and hardware
- Walk-in shower with framed enclosure
- Private water closet with elongated toilet
- Spacious walk-in closet with shelving and rods

### Energy Efficiency & Green Technology

- Central heating system with Wi-Fi programmable thermostat
- Energy efficient vinyl dual clear glass Low "E" windows
- Low-flow water fixtures
- Radon mitigation system



All information provided herein, including floorplans, renderings, square footages, home features, site plan, and community amenities, is Preliminary and subject to change without prior notice or obligation. Floorplans and renderings are artists' conception and not necessarily to exact scale. Copyright © 2023 Williams Homes. All rights reserved. State of Montana Board of Realty License #RRE-BRO-LIC-79203. Equal Housing Opportunity.





**MADISON**

— **NWX** —

## Standard Home Features



406 920 4060

2952 Technology Blvd W  
Suite 102

Bozeman, MT 59718

northwestcrossing@williamshomes.com

### Timeless Architectural Character & Exterior Details

- Fire-retardant asphalt shingle roof
- Contemporary entry door colored to match exterior color scheme with four-panel glass cutout and satin nickel finish hardware
- Chime front entry doorbell
- Steel roll-up garage doors with garage door opener and two remotes
- Pre-finished fiber cement board exterior siding with gable accents
- Full landscaping with in-ground sprinkler system and gravel beds around home (upgraded landscaping optional)
- Fenced back and side yard

### Gracious Interior Appointments

- Luxury vinyl plank flooring at entry, living and wet areas
- Distinctive, interior passage doors with designer-selected finish hardware
- Quartz countertops and luxury vinyl plank flooring in bathrooms
- Interior laundry with electric appliance hookups (washer and dryer optional)
- Baseboards and matching 3-4" door trim, with matching white electrical switches and outlets throughout
- Cable/data connection in living room and primary bedroom
- Ceiling fans in living and primary bedroom areas

### Inspiring Kitchen Designs

- Stainless steel appliance suite including refrigerator with water/ice-maker
- Single-basin stainless steel sink with Moen faucet
- Heavy duty garbage disposal
- Wood cabinetry in white, maple charcoal, or dovetail per plan with brushed nickel hardware and soft-close drawers and doors
- Quartz countertops and tile back splash
- Luxury vinyl plank flooring
- Illuminating LED recessed lighting
- Kitchen island with extra storage and electrical outlet

### Primary Suite Elegance

- Wood cabinetry in white, maple charcoal, or dovetail per plan with brushed nickel hardware and soft-close drawers and doors
- Dual undermount china sinks with matching brushed nickel fixtures and hardware
- Walk-in shower with hand-tiled surround
- Relaxing soaker tub per plan
- Private water closet with elongated toilet
- Spacious walk-in closet with shelving and rods

### Energy Efficiency & Green Technology

- Low maintenance gas fireplace
- Central heating system with Wi-Fi programmable thermostat
- Energy efficient vinyl dual clear glass Low "E" windows
- Low-flow water fixtures
- Radon mitigation system



All information provided herein, including floorplans, renderings, square footages, home features, site plan, and community amenities, is Preliminary and subject to change without prior notice or obligation. Floorplans and renderings are artists' conception and not necessarily to exact scale. Copyright © 2023 Williams Homes. All rights reserved. State of Montana Board of Realty License #RRE-BRO-LIC-79203. Equal Housing Opportunity.







**GALLATIN**

— NWX —

## Standard Home Features



406 920 4060

2952 Technology Blvd W  
Suite 102

Bozeman, MT 59718

northwestcrossing@williamshomes.com

### Timeless Architectural Character & Exterior Details

- Fire-retardant asphalt shingle roof
- Contemporary entry door colored to match exterior color scheme with four-panel glass cutout and satin nickel finish hardware
- Chime front entry doorbell
- Steel roll-up garage doors with garage door opener and two remotes
- Pre-finished fiber cement board exterior siding with gable accents
- Full landscaping with in-ground sprinkler system and gravel beds around home (upgraded landscaping optional)
- Fenced back and side yard

### Gracious Interior Appointments

- Luxury vinyl plank flooring at entry, living and wet areas
- Distinctive, interior passage doors with designer-selected finish hardware
- Quartz countertops and luxury vinyl plank flooring in bathrooms
- Interior laundry with electric appliance hookups (washer and dryer optional)
- Baseboards and matching 3-4" door trim, with matching white electrical switches and outlets throughout
- Cable/data connection in living room and primary bedroom
- Ceiling fans in living and primary bedroom areas

### Inspiring Kitchen Designs

- Stainless steel appliance suite including refrigerator with water/ice-maker
- Single-basin stainless steel sink with Moen faucet
- Heavy duty garbage disposal
- Wood cabinetry in white, maple charcoal, or dovetail per plan with brushed nickel hardware and soft-close drawers and doors
- Quartz countertops and tile back splash
- Luxury vinyl plank flooring
- Illuminating LED recessed lighting
- Kitchen island with extra storage and electrical outlet

### Primary Suite Elegance

- Wood cabinetry in white, maple charcoal, or dovetail per plan with brushed nickel hardware and soft-close drawers and doors
- Dual undermount china sinks with matching brushed nickel fixtures and hardware
- Walk-in shower with hand-tiled surround
- Relaxing soaker tub per plan
- Private water closet with elongated toilet
- Spacious walk-in closet with shelving and rods

### Energy Efficiency & Green Technology

- Low maintenance gas fireplace
- Central heating system with Wi-Fi programmable thermostat
- Energy efficient vinyl dual clear glass Low "E" windows
- Low-flow water fixtures
- Radon mitigation system



All information provided herein, including floorplans, renderings, square footages, home features, site plan, and community amenities, is Preliminary and subject to change without prior notice or obligation. Floorplans and renderings are artists' conception and not necessarily to exact scale. Copyright © 2023 Williams Homes. All rights reserved. State of Montana Board of Realty License #RRE-BRO-LIC-79203. Equal Housing Opportunity.

