

PONDEROSA

Approx. 1,329 Sq. Ft.
3 Bedrooms | 2 Baths
2-Car Garage



406 219 1248 • 384 Meadow View Loop • East Helena, MT

highlandmeadows@williamshomes.com

WILLIAMSHOMES.com



All information provided herein, including floorplans, renderings, square footages, home features, site plan, and community amenities, is Preliminary and subject to change without prior notice or obligation. Floorplans and renderings are artists' conception and not necessarily to exact scale. Copyright © 2023 Williams Homes. All rights reserved. State of Montana Board of Realty License #RRE-BRO-LIC-79203. Equal Housing Opportunity.



SPRUCE

Approx. 1,429 Sq. Ft.
3 Bedrooms | 2 Baths
2-Car Garage



406 219 1248 • 384 Meadow View Loop • East Helena, MT

highlandmeadows@williamshomes.com

WILLIAMSHOMES.com

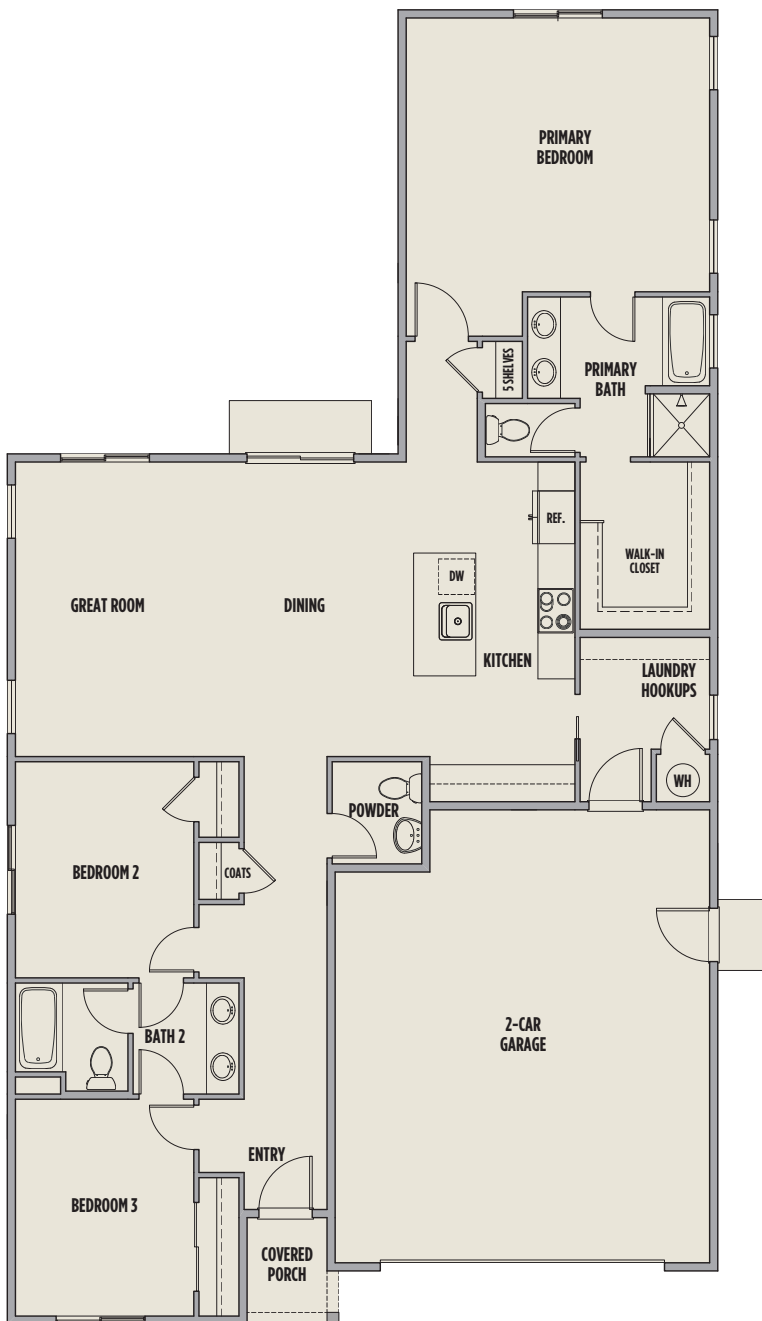


All information provided herein, including floorplans, renderings, square footages, home features, site plan, and community amenities, is Preliminary and subject to change without prior notice or obligation. Floorplans and renderings are artists' conception and not necessarily to exact scale. Copyright © 2023 Williams Homes. All rights reserved. State of Montana Board of Realty License #RRE-BRO-LIC-79203. Equal Housing Opportunity.



ASPEN

Approx. 1,754 Sq. Ft.
3 Bedrooms | 2.5 Baths
2-Car Garage



406 219 1248 • 384 Meadow View Loop • East Helena, MT

highlandmeadows@williamshomes.com

WILLIAMSHOMES.com



All information provided herein, including floorplans, renderings, square footages, home features, site plan, and community amenities, is Preliminary and subject to change without prior notice or obligation. Floorplans and renderings are artists' conception and not necessarily to exact scale. Copyright © 2024 Williams Homes. All rights reserved. State of Montana Board of Realty License #RRE-BRO-LIC-79203. Equal Housing Opportunity.



CEDAR

Approx. 2,239 Sq. Ft.

Main Level 1,516 Sq Ft

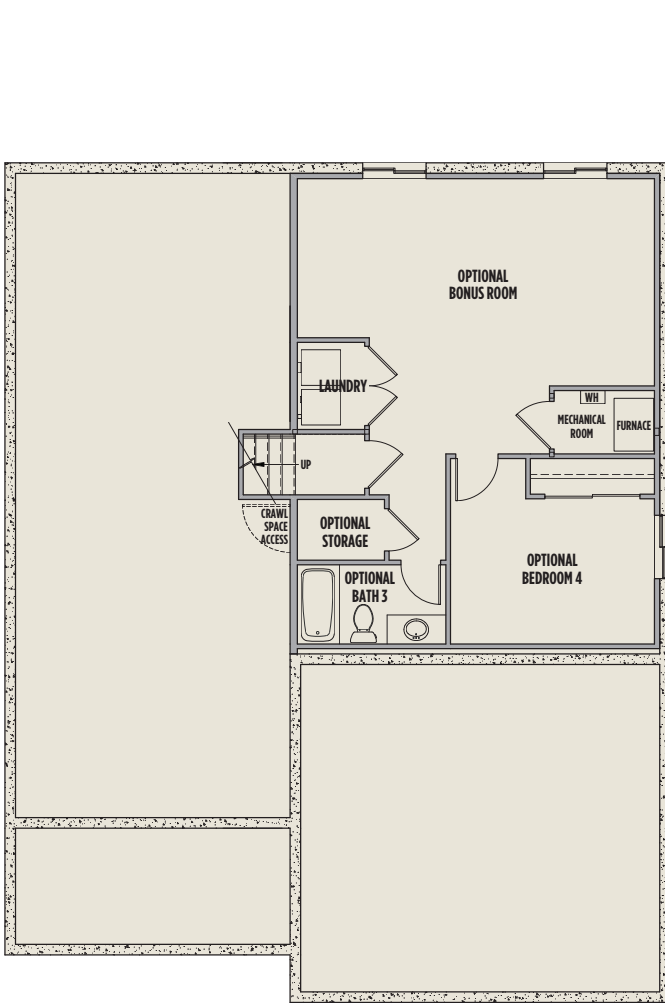
Lower Level 723 Sq Ft

3 Bedrooms | 2 Baths

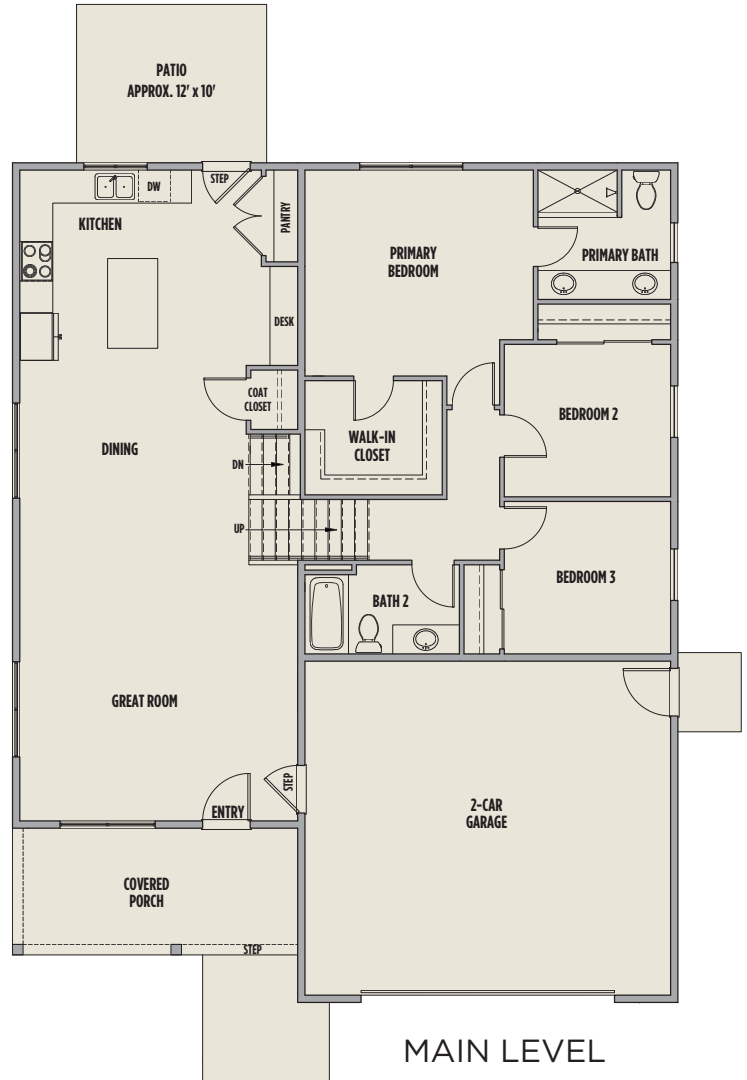
2-Car Garage

Finished Basement Adds

4th Bedroom and 3rd Bath



BASEMENT



MAIN LEVEL



406 219 1248 • 384 Meadow View Loop • East Helena, MT

highlandmeadows@williamshomes.com

WILLIAMSHOMES.com

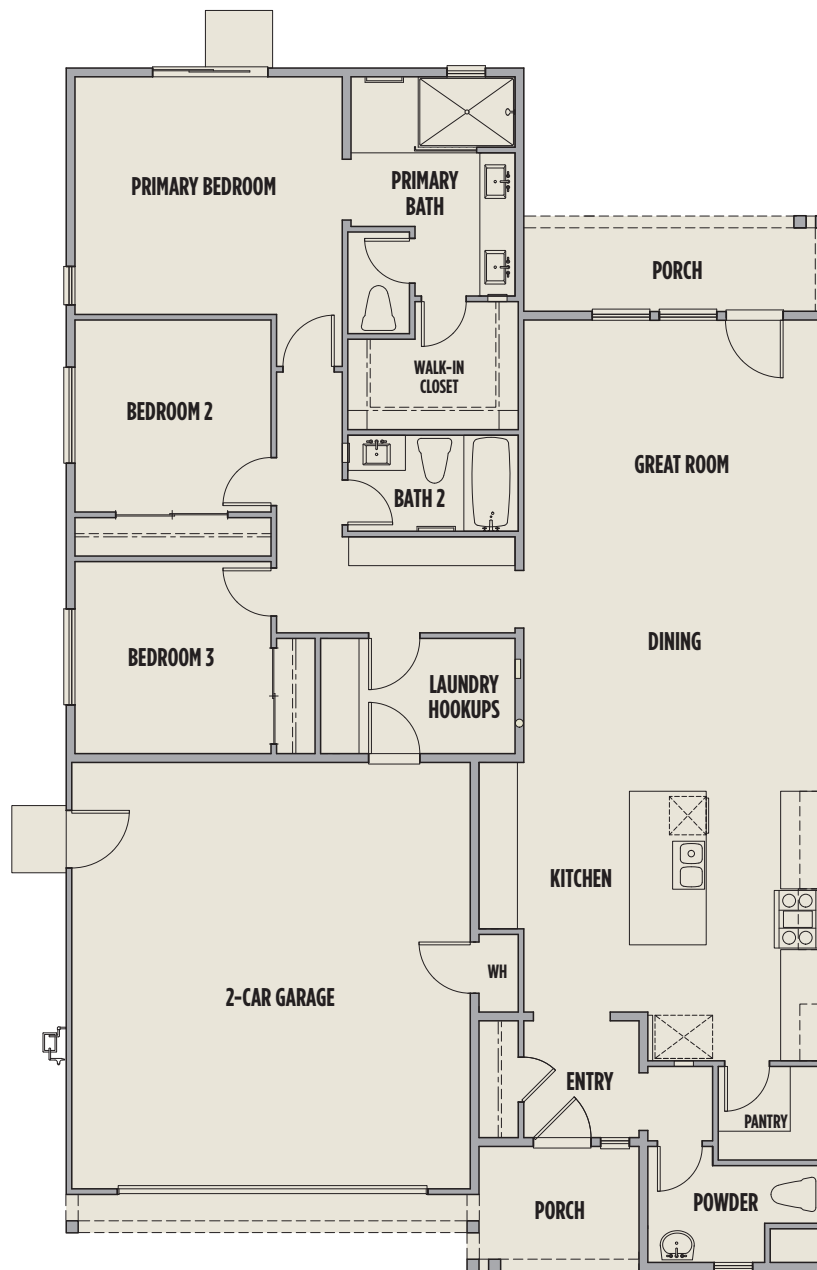


All information provided herein, including floorplans, renderings, square footages, home features, site plan, and community amenities, is Preliminary and subject to change without prior notice or obligation. Floorplans and renderings are artists' conception and not necessarily to exact scale. Copyright © 2024 Williams Homes. All rights reserved. State of Montana Board of Realty License #RRE-BRO-LIC-79203. Equal Housing Opportunity.



QUARTZ

Approx. 1,680 - 1,685 Sq. Ft.
3 Bedrooms | 2.5 Baths
2-Car Garage



406 219 1248 • 384 Meadow View Loop • East Helena, MT

highlandmeadows@williamshomes.com

WILLIAMSHOMES.com

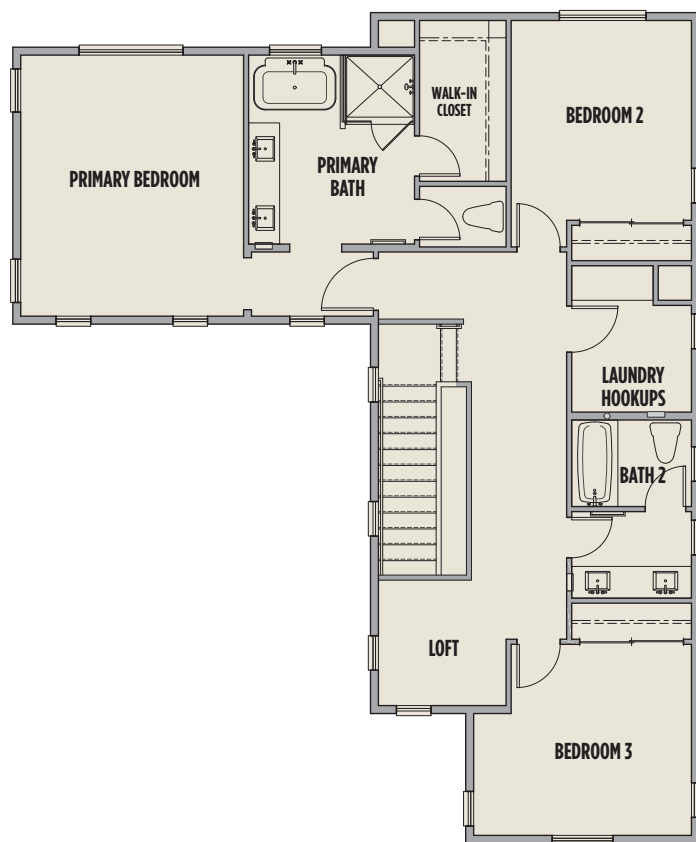
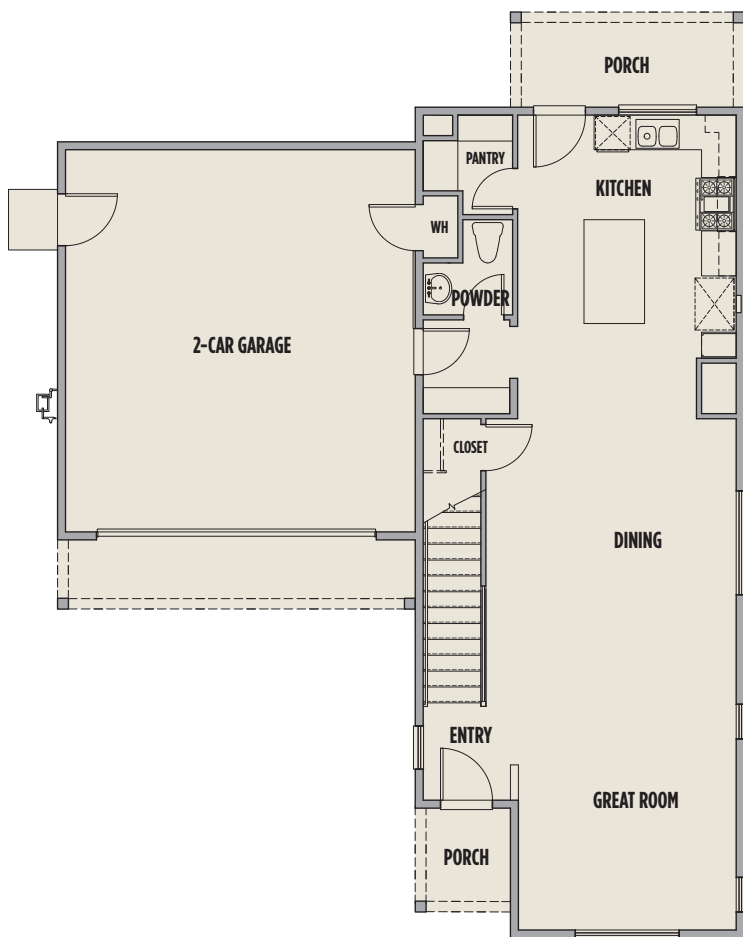


All information provided herein, including floorplans, renderings, square footages, home features, site plan, and community amenities, is Preliminary and subject to change without prior notice or obligation. Floorplans and renderings are artists' conception and not necessarily to exact scale. Copyright © 2023 Williams Homes. All rights reserved. State of Montana Board of Realty License #RRE-BRO-LIC-79203. Equal Housing Opportunity.



GARNET

Approx. 1,999 - 2,015 Sq. Ft.
3 Bedrooms | 2.5 Baths
2-Car Garage



406 219 1248 • 384 Meadow View Loop • East Helena, MT

highlandmeadows@williamshomes.com

WILLIAMSHOMES.com

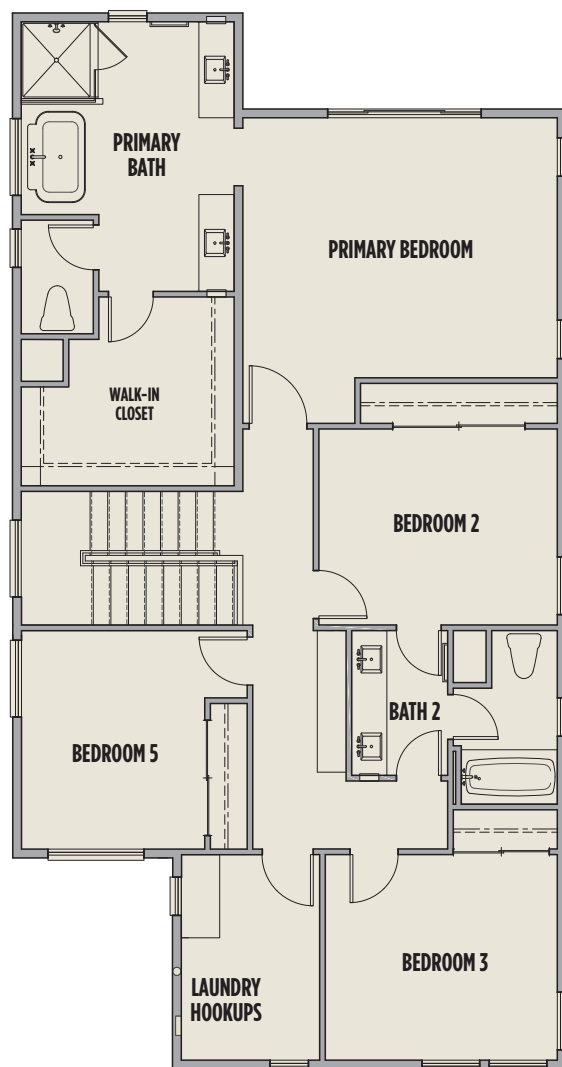
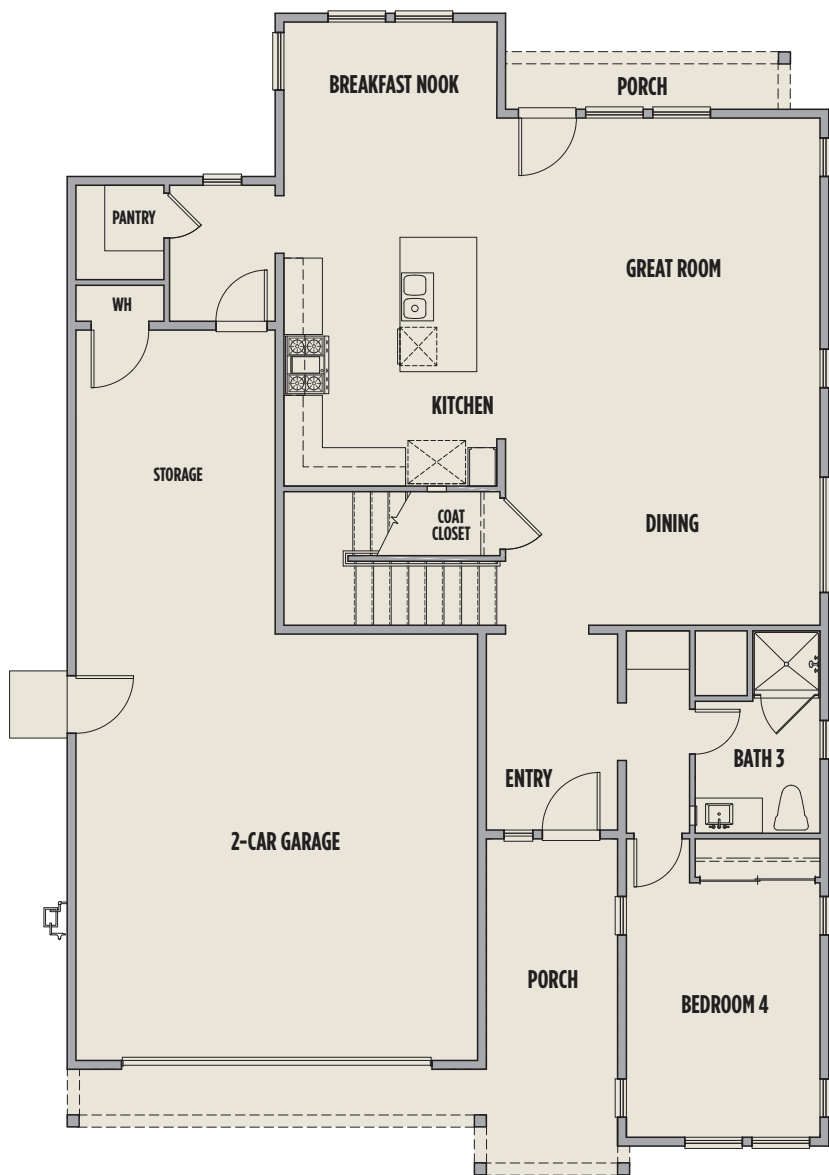


All information provided herein, including floorplans, renderings, square footages, home features, site plan, and community amenities, is Preliminary and subject to change without prior notice or obligation. Floorplans and renderings are artists' conception and not necessarily to exact scale. Copyright © 2023 Williams Homes. All rights reserved. State of Montana Board of Realty License #RRE-BRO-LIC-79203. Equal Housing Opportunity.



SAPPHIRE

Approx. 2,647 - 2,665 Sq. Ft.
5 Bedrooms | 3 Baths |
3-Car Tandem Garage



406 219 1248 • 384 Meadow View Loop • East Helena, MT

highlandmeadows@williamshomes.com

WILLIAMSHOMES.com



All information provided herein, including floorplans, renderings, square footages, home features, site plan, and community amenities, is Preliminary and subject to change without prior notice or obligation. Floorplans and renderings are artists' conception and not necessarily to exact scale. Copyright © 2023 Williams Homes. All rights reserved. State of Montana Board of Realty License #RRE-BRO-LIC-79203. Equal Housing Opportunity.

